

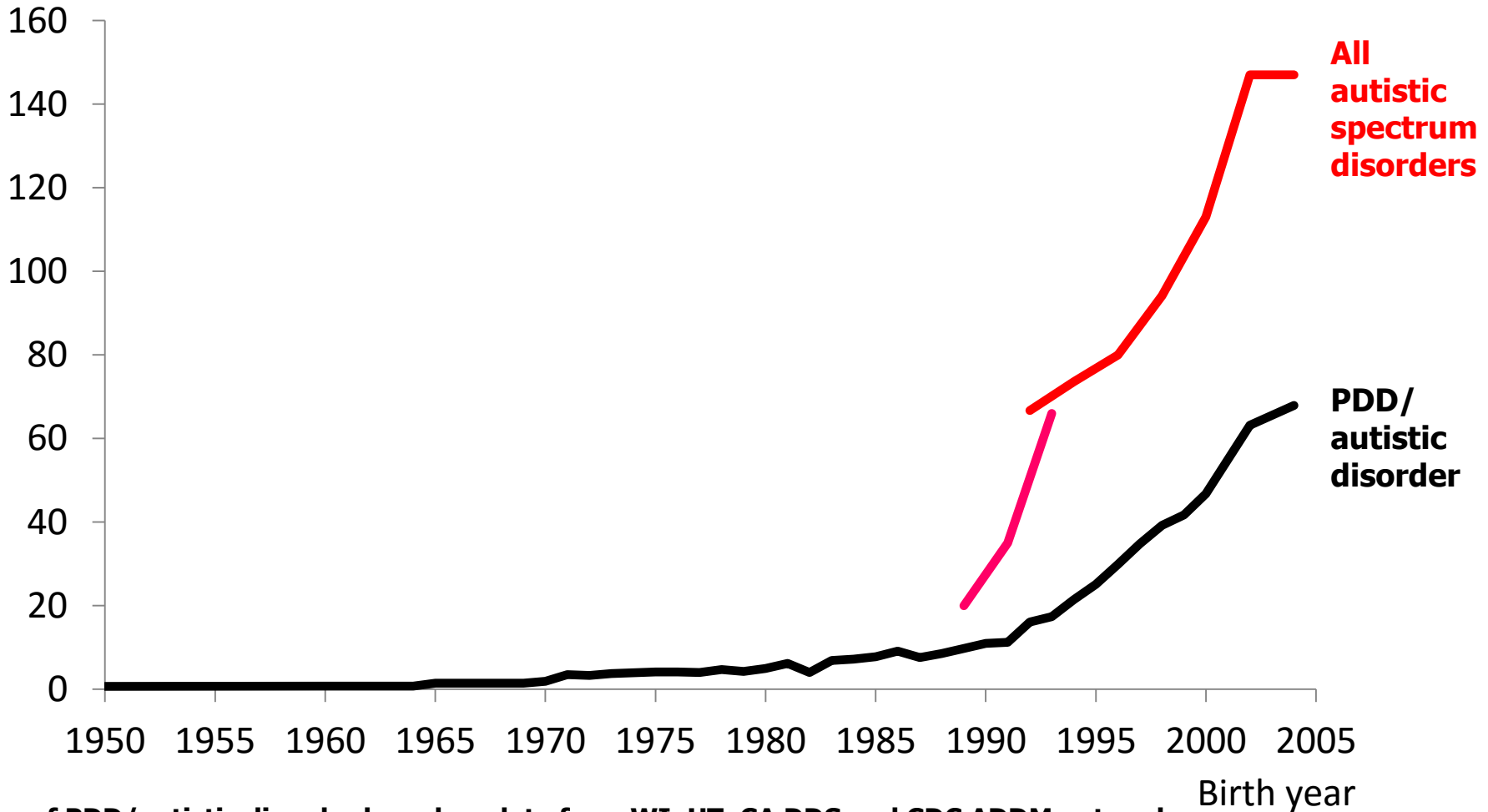
THE AUTISM EMERGENCY CONTINUES
1 IN 68 CHILDREN
BORN IN 2004

*Mark Blaxill: Chairman, Executive Leadership Team
Health Choice*

March 31, 2016

SINCE 1990, AUTISM RATES HAVE EXPLODED: SOMETHING NEW AND TERRIBLE IS HAPPENING TO A GENERATION OF CHILDREN

Autism cases per 10,000



¹ Rates of PDD/autistic disorder based on data from WI, UT, CA DDS and CDC ADDM network

² Rates for Autism Spectrum disorder based on surveys of 8 year olds: MN from 1989-93 and CDC ADDM network from 1992-2002

The CDC continues to misrepresent the alarming rise in autism rates since the late 1980s

Crucial flaws in CDC surveillance, including negligent design, willful ignorance and possible fraud

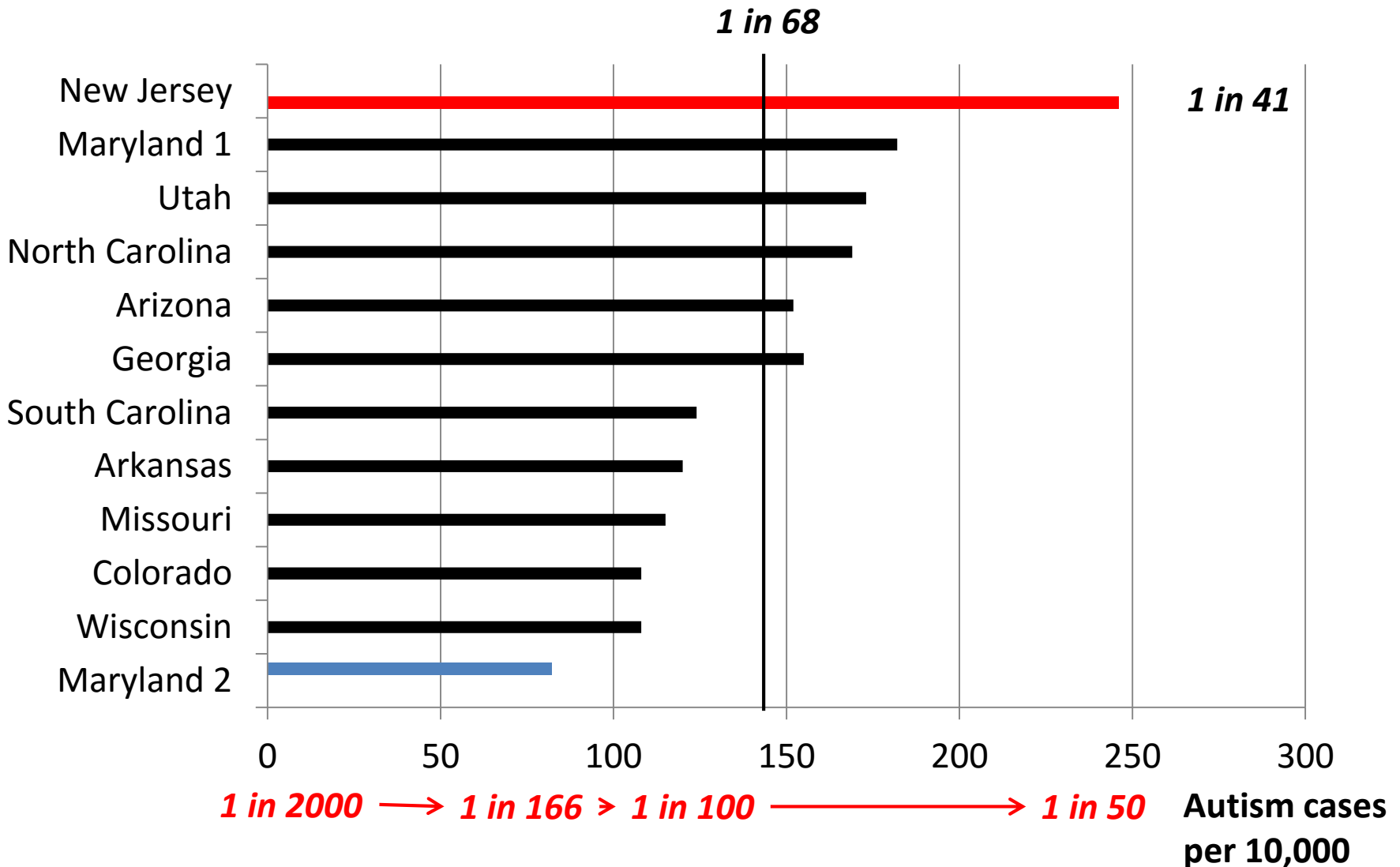
The surveillance program is poorly designed

- Begins in 1992 birth year, *after* the clear inflection point around 1988-90
- Extends only to 2004 birth cohort: 4 years late, 12 years behind the problem
- State coverage is partial and biased, e.g.
 - What happened to Utah and New Jersey in 1996/98 birth years?
 - What happened to Brick NJ/Ocean County, the first area studied in NJ, included in ADDM birth years 1992, 1994, 2002, 2004 then excluded in 2000?
 - Where are highest prevalence states, e.g. Minnesota, Oregon and Maine?
 - Why are so many state programs (e.g. FL, AL, PA and WV) launched then halted

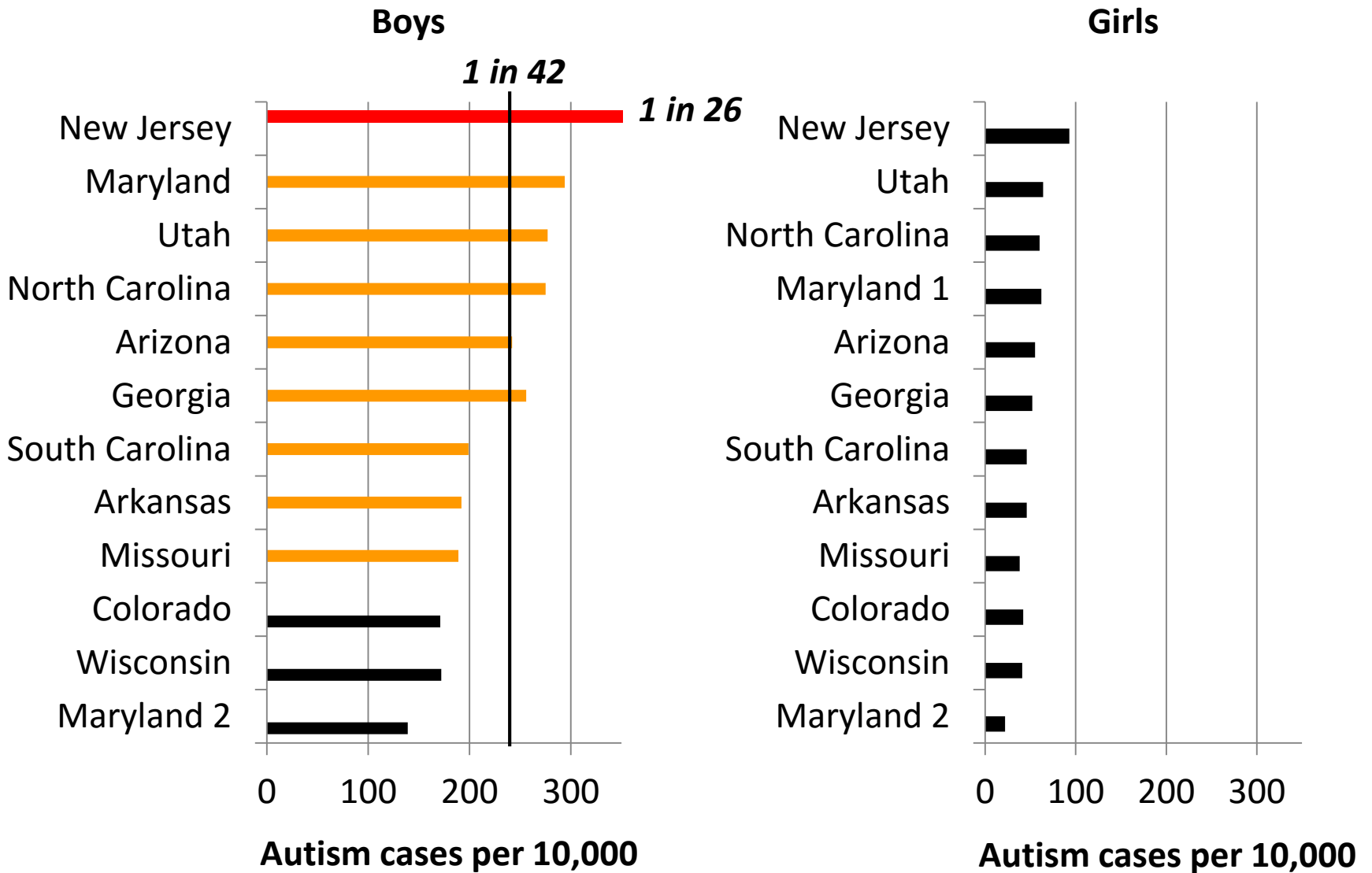
Critical unanswered questions suggest willful ignorance

- What happened in Utah? Utah lawsuit points to data errors
- Why are earlier birth years in Georgia, one recently published elsewhere, not included? Early rates show over a tenfold rise from 1986-2004
- Why are earlier birth years in NJ that were collected previously not reported? NJ had ADDM's highest reported ASD rate in 2004 births but had zero rate for autistic disorder in 1988-9

ADDM autism rates by state in 8 year olds born in 2004

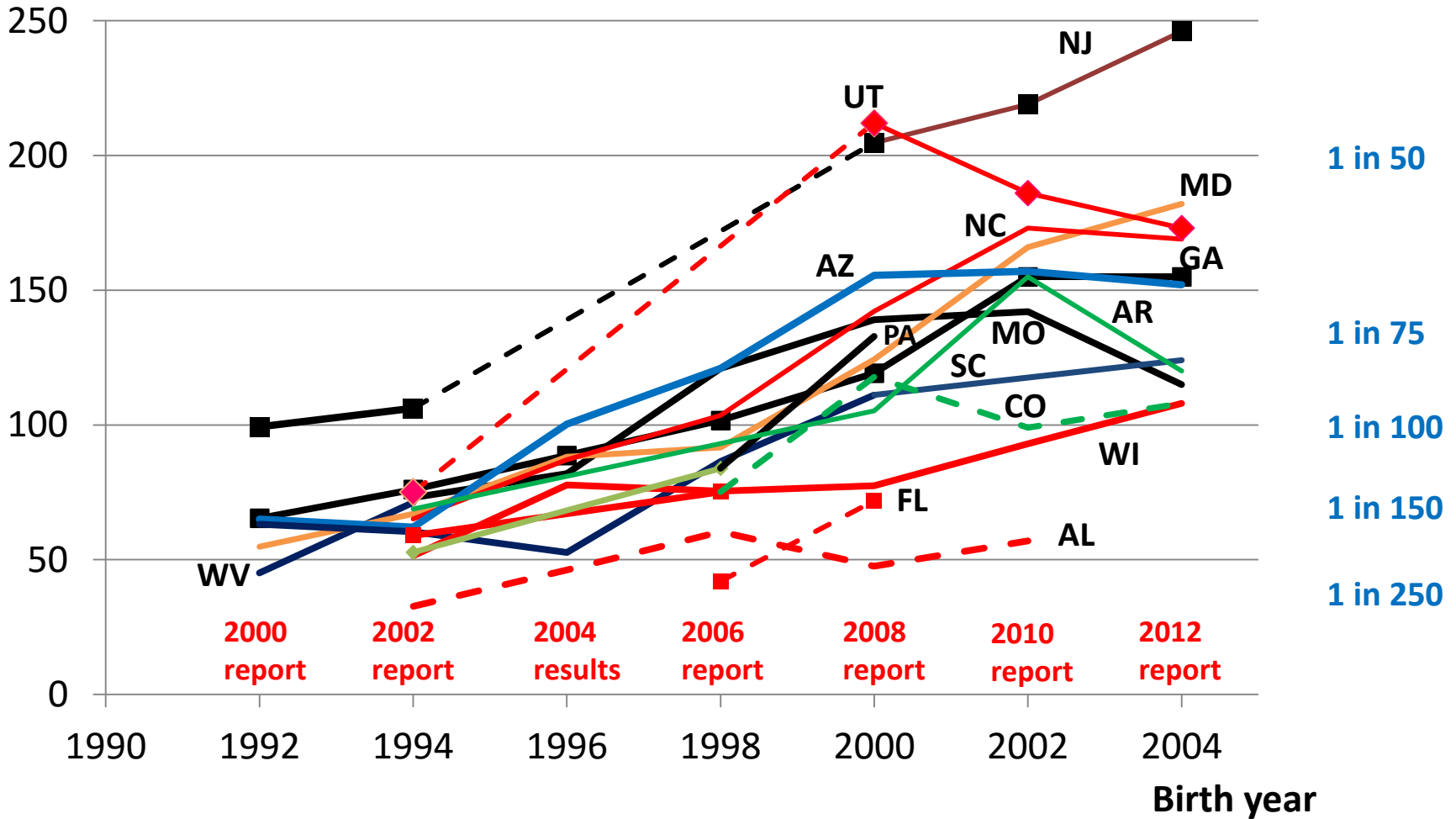


ADDM autism rates by state in 8 year olds born in 2004



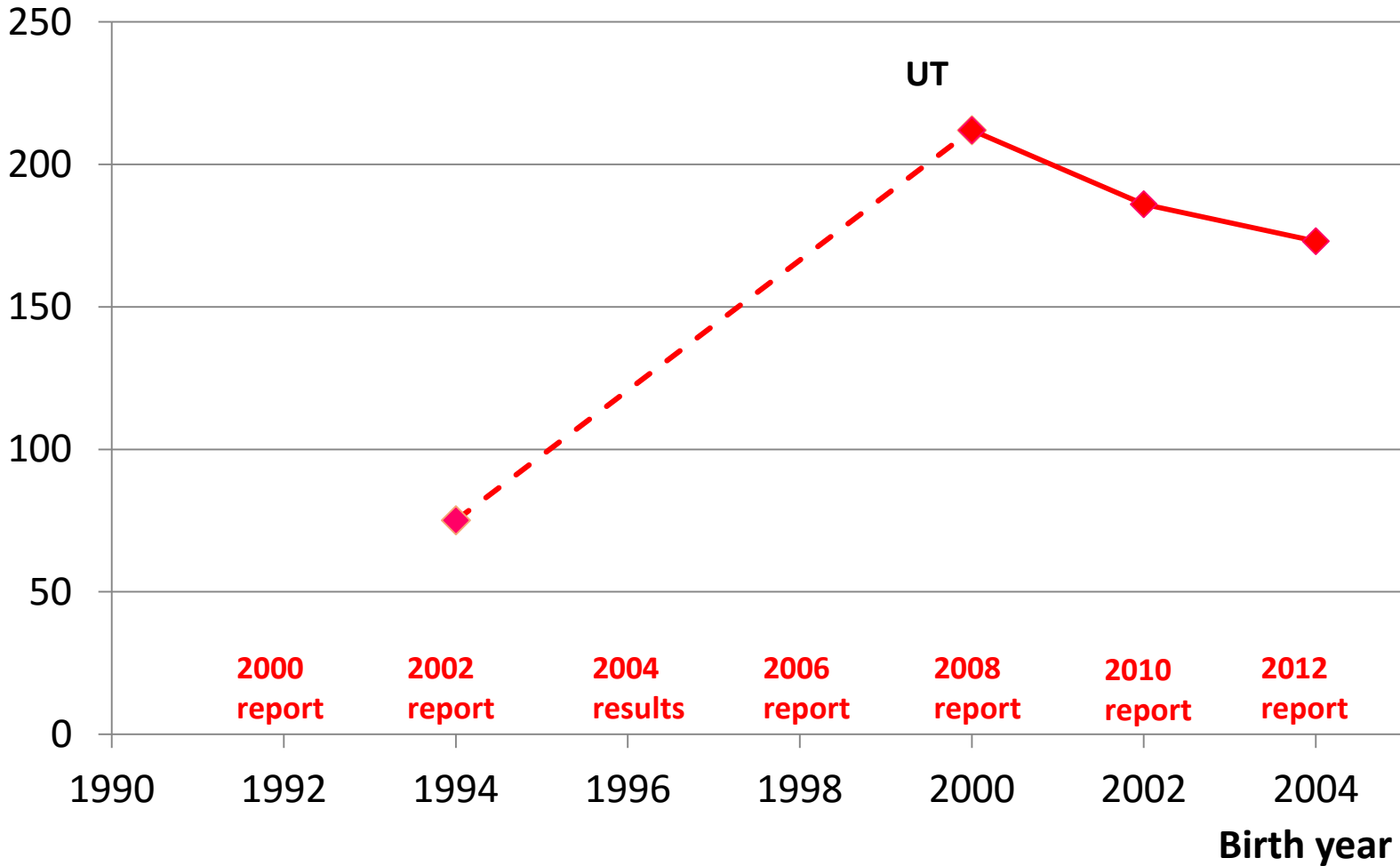
ADDM autism rates by state in 8 year olds born from 1992-2004

Autism cases
per 10,000



What happened in Utah?

Autism cases
per 10,000



Accusations of data errors in a Utah whistleblower lawsuit from the former Utah site director

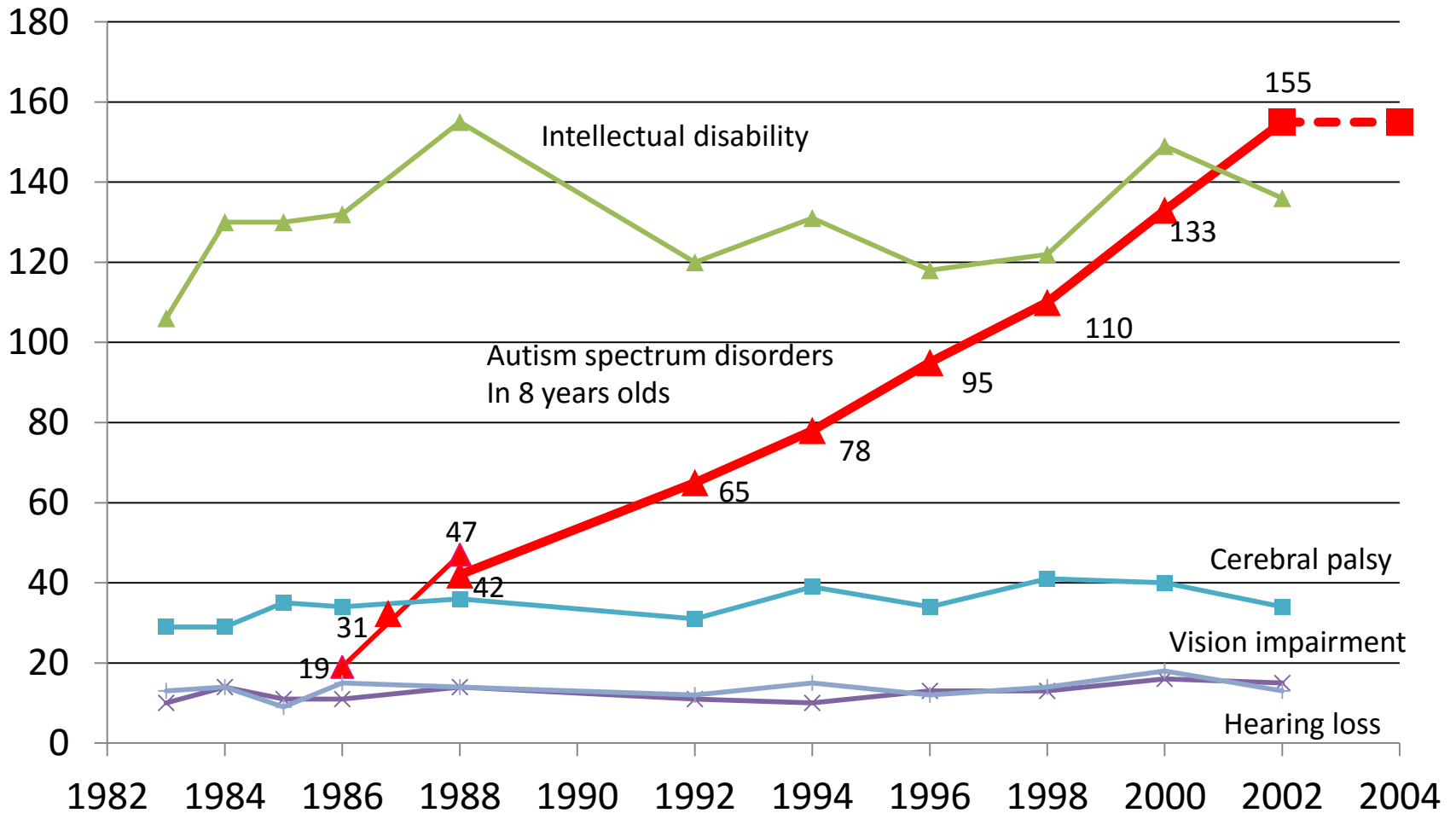
- 56. Zimmerman “reported that [University researchers] were publishing data under people’s names who had not done the work and that the data contained uncorrected errors
- 65. Dr. Zimmerman testified, “I think the fact that I reported data errors, research misconduct, is significant,” ...
- 66. On or about December 2012, Dr. Zimmerman also reported the same concerns she had made to the University’s Privacy & Security office to the United States Department of Health and Human Services.... She reported her concerns to the CDC as well.

Further evidence of uncorrected errors in a deposition of a Utah site employee, Amy Henderson

- “This is E-mail correspondence amongst Judy, myself, Jon Baio at the CDC, the statistician, Tyler, abstractor, Geoff, regarding correcting errors within the 2008 and 2010 ARCHE databases....
- “Tyler...came to me with a list of tracking IDs...so basically children's ID for me to look up in the database to double check some information. When I went in to double check the information, it was --the information he wanted was irrelevant to what I – to what this is talking about, which was I noticed that the ICD9 codes were in a strange format in the database...There were a variety of different errors. Some ICD9 codes had leading zeros that shouldn't have leading zeros, some of the ICD9 codes had -- I think it was the leading zeros that ended up being the biggest problem because a 0299 code is very different than 299.0 code.”

The CDC reports GA autism rates for 1986-88 birth years in other publications but begins ADDM report in 1992

Cases per 10K



Sources: Braun et al 2015, Yeargin-Allsopp et al 2003, ADDM

Birth year

THE AUTISM EMERGENCY CONTINUES
1 IN 68 CHILDREN
BORN IN 2004

*Mark Blaxill: Chairman, Executive Leadership Team
Health Choice*

March 31, 2016